

ARTWORK - HAND-CRAFTED



21649 From the studio of one of the world's finest silversmiths comes a fine and unique centerpiece, donated by **Patrick Mavros, Sculpture in Silver.** 'Cheetah Hunt at Sundown' is an exquisite composition of three exceptional hunting cheetahs in high gear as they bear down on a gazelle in full flight. This piece is one of the artist's most ambitious creations, the original made especially for the Spanish Royal Palace. For more information, contact Alex at Int. 011-44-207052-0001. Company's Website: www.patrickmavros.com. Donor's Valuation: \$45,000

We thank Patrick Mavros, Sculpture in Silver for this 100% donation.



21650 Patrick Mavros, Sculpture in Silver, has donated a set of big-five cigar ashtrays. This is the first set in a series of five that has been carefully crafted with astonishing detail in sterling silver, and it was made exclusively for SCI. Each exquisite ashtray comes in an exceptional custom-built, leather-and-silk presentation display case, crafted by one of the world's finest silversmiths, **Patrick Mavros.** For more information, contact Alex at Int. 011-44-207052-0001. Company's Website: www.patrickmavros.com. Donor's Valuation: \$17,500

We thank Patrick Mavros, Sculpture in Silver for this 100% donation.

21752 Hand-carved, leadwood, life-size Kalahari bushman, donated by **African Market.** Leadwood is extremely dense and difficult to carve, reflecting the challenging hunter-gatherer and farming lifestyle of the bushman. Patiently crafted with imagination, this piece will undoubtedly stir conversation and complement the decor and ambiance of your home. For more information, contact Larry at 530-827-2879. Company's Website: www.trophyroomcollection.com. Donor's Valuation: \$15,000

21556 Verdite sculpture titled 'Communications,' donated by **Call of Africa.** A mother elephant and her older calf share a tender moment, African style, by intertwining trunks in a delicate manner. An excellent addition to the decor of your home or office. Measures 26-in. x 24-in. x 13-in. For more information, contact Ross at 954-767-8737. Company's Website: www.callof africa.com. Donor's Valuation: \$10,320

21558 'The Look Out,' sculpture in verdite, donated by **Call of Africa.** This exceptional hand-carved piece depicts two warthogs in a somewhat comical scene. One is lying down enjoying a respite, while the other uses his back for leverage to scan the horizon. Measures 17-in. x 19-in. x 20-in. For more information, contact Ross at 954-767-8737. Company's Website: www.callof africa.com. Donor's Valuation: \$9,600

21557 Call of Africa has donated a verdite sculpture titled 'Bushveld Mom.' A unique piece by Zimbabwean **James Tandi** of a warthog with two babies. This sculpture depicts a mother and her young in a protective and endearing stance. Measures 13-in. x 16-in. x 23-in. For more information, contact Ross at 954-767-8737. Company's Website: www.callof africa.com. Donor's Valuation: \$8,400

21734 Crystal bowl and vase with Cape buffalo engraving, donated by **Wayland H. Cato III.** Having mastered the art of glass engraving using copper wheel and diamond point engraving, Wayland has been credited with reviving stone wheel engraving and bringing it to a level never before reached in glass history. He has taken wheel engraving with a hand-held Dremel tool and combined it with his engraving knowledge to create beautiful works of glass art. For more information, visit www.catoglass.com. Donor's Valuation: \$5,000

We thank Wayland H. Cato, III for this 100% donation.



21195 Streamline Originals has donated an original, three-dimensional leather sculpture titled 'Halibut.' Created by artist, fly fisherman and outdoor enthusiast Lance Marshall Boen, this sculpture is unique, displaying intricate texture and brush work that invite the viewer to become lost in the complexity of its subtle and dramatic surfaces. This exceptional sculpture is sure to be a conversation piece that will add richness to the decor and ambiance of any home, lodge or business. Measures approximately 32-in. x 17-in. For more information, visit www.streamlineoriginals.com or contact Lance at 831-659-5600. Donor's Valuation: \$2,000

We thank StreamLine Originals for this 100% donation.

21226 A leadwood carving of an elephant bull breaking a tree has been donated by **Ingilosi**

Woodart and Safaris. Found from the Kwa-Zulu Natal province of South Africa to Tanzania in the north, the leadwood tree is well-known as one of the hardest woods in the world, and is extremely difficult to work. A rich brown in color, this intricately detailed elephant carving will truly complement the decor of any home or lodge. Measures approx. 12-in. tall, 12-in. wide and 22-in. in length. For additional information, contact Roy by fax at Int. 27-14-763-5057. Donor's Valuation: \$3,500

We thank Ingilosi Woodart and Safaris for this 100% donation.

ARTWORK - ORIGINAL ART

21505 Original oil on canvas of wildlife, donated by **Craig Bone.** Measures 36-in. x 22-in. For more information, contact Anne-Marie at 954-341-6350. Donor's Valuation: \$25,000

We thank Craig Bone for this 100% donation.



20893 Five original oil paintings of Old World big cats, donated by **Besse Art.** Wildlife artist **Linda Besse** has created this set exclusively for the 2008 SCI Convention. Each painting depicts one of the big cats from Africa or Asia (Siberian tiger, leopard, lion, cheetah and snow leopard) and measures 11-in. x 16 1/2-in. These five oil paintings are individually framed and will be perfect for your home or office. For more information about Linda's work, visit www.BesseArt.com or give her a call at 509-238-9129. Donor's Valuation: \$11,000

20934 An original acrylic on panel titled 'Portrait of a Lady' has been donated by **Jan Martin McGuire-Artist, Naturalist** specifically for the Sables auction. Believing that it is important to experience all that she paints, Jan travels the world, sketching, photographing and painting in the field. This magnificent painting by SCI's **Conservation Artist of the Year, Jan Martin McGuire,** is an intimate portrait of a beautiful African lioness. As we all know, the lioness is the one who does the 'lion's share' of the work in a pride! This is one of the actual lionesses depicted in Jan's Conservation Artist of the Year painting, 'Simba Shadows.' Measures 24-in. x 18-in. For more information, visit www.janmartinmcguire.com. Donor's Valuation: \$8,750

We thank Jan Martin McGuire-Artist, Naturalist for this 100% donation.



SAMPLE OF WORK

21521 Original oil on canvas of a Cape buffalo, donated by **Adam Freeman Studio**. Artist **Adam Freeman** captures strength and beauty in this magnificent depiction of a solitary old bull. Painting is framed and measures approx. 24-in. x 36-in. For more information, contact Adam at 513-576-1010. Company's Website: www.adamfreeman.com. Donor's Valuation: \$9,500

We thank Adam Freeman Studio for this 100% donation.



SAMPLE OF WORK

21522 **Adam Freeman Studio** has donated an original oil on canvas of Cape buffalo. Absorb the strength and power of these impressive creatures in artist **Adam Freeman's** depiction of a small group of heavily bossed old bulls. Painting measures 24-in. x 36-in. and is framed. For more information, contact Adam at 513-576-1010. Company's Website: www.adamfreeman.com. Donor's Valuation: \$9,500



21836 Original acrylic titled 'The Challenger,' donated by **Cynthia's Wildlife Originals**. After traveling twelve times to Africa, artist **Cynthia Fisher** probably spent more time studying zebras than any other animal. She has many mounts of the various zebra species at her home and has taken thousands of photos in the field. This depiction portrays zebra stallions seen fighting on a trip to Namibia. Measures 30-in. x 36-in. For more information, contact Cynthia at 406-375-1445. Company's Website: www.fisherart.com. Donor's Valuation: \$7,800

21629 An original watercolor depicting African wildlife, donated by **Tanganyika Wildlife Safaris** and painted by the French artist **Cecile Riolet**. Measures approx. 26-in. x 18-in. For more information, contact Brigitte at 210-822-8535. Donor's Valuation: \$5,000
We thank Tanganyika Wildlife Safaris for this 100% donation.



SAMPLE OF WORK

21523 Gift certificate for a custom-painted hunter portrait, donated by **Gallagher Portraits**. Create a legacy for your family or trophy room with a custom, fine-art oil portrait. The image size will be 18-in. x 24-in., created from your own personal photos, or if you choose, Sherry Gallagher can arrange to photograph you herself. The portrait subject is limited to one person, but can be upgraded at additional cost. Expires one year from date of purchase. For more information, contact Sherry at 406-761-4980 or visit her at her booth. Donor's Valuation: \$3,500



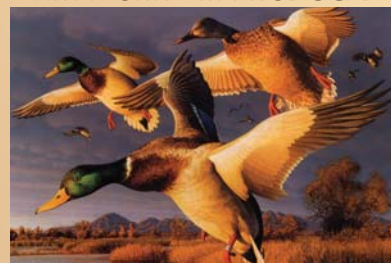
21583 Original **Sherry Steele** scratchboard titled 'Full - but Still Tempted,' donated by **Sherry Steele Unlimited**. Etched in stark black and white, the technique of working on scratchboard is perfectly suited to catch the sweep of the lion's mane and contours of his heavily muscled body. The migration has begun as wildebeest stream across the Serengeti, their scent carried on the hot wind, straight into the lions' faces. Bellies still full from the night's kill, the lions find the sight irresistible and rise for a better look. Custom framed and matted with antiqued silver fillet, the piece nearly glows on the wall. Measures 32 1/2-in. x 29-in. For more information, contact Sherry at 512-892-3553. Company's Website: www.sherrysteele.net. Donor's Valuation: \$1,900

We thank Sherry Steele Unlimited for this 100% donation.

21635 An original African animal painting on hippo leather has been donated by **Western Taxidermy Studio**. This distinctive piece exudes the creative imagination of the artist through the use of hippo hide, cut in the shape of the African continent, as the 'canvas' for this wonderful work of art. For more information, contact Patti at 406-293-7158. Company's Website: www.westerntaxidermy.com. Donor's Valuation: \$2,600

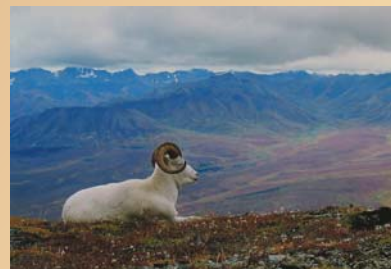
We thank Western Taxidermy Studio for this 100% donation.

ARTWORK - REPRODUCED



21440 California 1996 Duck Stamp print donated by **Steiner Prints**. Framed governor's edition with color remarque No. 95 of 150 by world-renowned artist **Robert Steiner**. Features a trio of mallards landing near the famous Sutter Buttes Mountain Range in California. The print is signed by both Robert and former California Gov. Pete Wilson and is framed with a mint stamp, artist-signed stamp, governor-signed stamp and a beautiful commemorative medallion. The print has an original, hand-painted acrylic remarque on the lower margin. Duck stamp prints are some of the most highly collected prints in America today and over the past thirty years have appreciated in value more than any other American art print. For more information, stop by the Steiner Prints booth and visit with the artist personally or contact Steiner Prints at 415-387-9754. Company's Website: www.steinerprints.com. Donor's Valuation: \$8,000

We thank Steiner Prints for this 100% donation.



21748 'Dall Sheep,' limited-edition giclee, donated by **Anderson Images**. Produced with archival inks, this stunning Dall sheep reproduction on canvas by **Eric R. Anderson** is signed, numbered and highlighted with a shadow-box frame. Measures approx. 3-ft. x 9-ft. For more information, contact Jennifer at 907-868-1202. Company's Website: www.andersonimages.com. Donor's Valuation: \$6,200

We thank Anderson Images for this 100% donation.

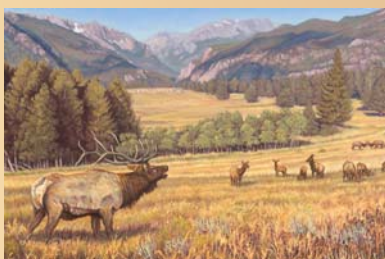


21626 Artist-enhanced, canvas giclee titled 'King of the Lake,' donated by **Gary R. Johnson Studio**. This stunning image of a bull moose in the Rocky Mountains is an exclusive, hand-painted canvas reproduction. Artist **Gary R. Johnson** has enhanced the giclee with oil paints to create a uniquely original piece of art. Beautifully framed, measuring 40-in. x 60-in. For more information, contact Gary at 760-942-7373. Company's Website: www.grjstudio.com. Donor's Valuation: \$3,000

We thank Gary R. Johnson Studio for this 100% donation.



21413 The Great Cats Collection portfolio by Simon Combes, donated by **Out of Africa-In Montana Gallery**. This coffee table portfolio consists of nine prints with slip cases plus a special print of 'Lion About' by Combes. The Great Cats Collection contains 'Pride,' 'Serious Intent,' 'Eyes of Warning,' 'Snow Tracker,' 'Siberian Winter,' 'Mountain Myth,' 'Jungle Phantom,' 'Golden Silhouette' and 'Indian Summer.' For more information, contact Skip Tubbs at 406-580-4295. Company's Website: www.fwdart.com. Donor's Valuation: \$2,400



21627 Artist-enhanced, canvas giclee titled 'Who's the Boss?,' donated by **Gary R. Johnson Studio**. This spectacular depiction of Rocky Mountain elk displaying rut behavior is an exclusive, hand-painted canvas reproduction. The artist, **Gary R. Johnson**, has used oil paints to create a uniquely original piece of art. This beautifully framed painting measures 24-in. x 36-in. For more information, contact Gary at 760-942-7373. Company's Website: www.grjstudio.com. Donor's Valuation: \$1,800

We thank Gary R. Johnson Studio for this 100% donation.



21528 **Craig Tennant Originals, Inc.** has donated a giclee print on canvas titled 'Rocky.' From a limited edition of 250, the print is complemented with a distressed-wood frame with cream linen liner and a golden fillet accent. Measures 24-in. x 36-in. For more information, contact Cheryl at 303-642-3286. Company's Website: www.craigtennant.com. Donor's Valuation: \$1,400

We thank Craig Tennant Originals, Inc. for this 100% donation.

21759 **Doug Eck Studios** and **Joshua Spies** have donated a giclee on canvas titled 'The Trailblazer.' This print depicts a common scene in Africa of an old bull elephant with a graceful impala in the background. Measures 38-in. x 50-in. unframed and 48-in. x 60-in. framed. For more information, contact Doug at 425-392-9693. Company's Website: www.dougeck-bronze.com. Donor's Valuation: \$3,950

We thank Doug Eck Studios for this 100% donation.



21600 'The Painted Phantoms of Africa,' artist proof in pen and ink with original remarque, donated by **Sherry Steele Unlimited**. Caught in a rare moment of relative quiet, a pair of African wild dogs has paused to share the bond of affection and responsibility. A high intelligence is clearly evident in their piercing eyes. Among Africa's most efficient hunters, wild dogs have also become one of its endangered species. Their trademark coloration of white-tipped tails and Mickey Mouse ears make them a perfect subject for artist **Sherry Steele's** pens and inks. Measures 33-in. x 29-in. with a one-of-a-kind, handmade leather frame made exclusively for Sherry Steele Unlimited. For more information, contact Sherry at 512-892-3553. Company's Website: www.sherrysteelene.net. Donor's Valuation: \$1,200

We thank Sherry Steele Unlimited for this 100% donation.



21414 The Great Cats Collection portfolio by Simon Combes, donated by **Out of Africa-In Montana Gallery**. This coffee table portfolio consists of nine prints with slip cases plus a special print of 'Lion About' by Combes. The Great Cats Collection contains 'Pride,' 'Serious Intent,' 'Eyes of Warning,' 'Snow Tracker,' 'Siberian Winter,' 'Mountain Myth,' 'Jungle Phantom,' 'Golden Silhouette' and 'Indian Summer.' For more information, contact Skip Tubbs at 406-580-4295. Company's Website: www.fwdart.com. Donor's Valuation: \$2,400

ARTWORK - SCULPTURED METAL



SAMPLE OF WORK

21638 'Swamp Buck,' life-size whitetail deer bronze, donated by **Bud Burger Bronze Sculpture**. A dream buck for any avid deer hunter, this non-typical whitetail has approximately a 215-in. rack with two drop tines. Body size is representative of the northern-range species. Bronze sculpture weighs approx. 450-lbs. and measures 86-in. tall x 71-in. long. For more information, contact Bud Burger at 218-751-6980. Donor's Valuation: \$23,000

We thank Bud Burger Bronze Sculpture for this 100% donation.



21802 Bronze titled 'Cape Buffalo Study,' donated by **Blackbeard, Hepburn & Tolmay Safaris**. This bronze bust of the mighty Cape buffalo is a perfect display piece for your den or

trophy room. Measures 19-in. x 15-in. x 15-in. and weighs approx. twenty lbs. For more information, contact Peter at 267-625-0254. Donor's Valuation: \$11,000



20890 This life-size Panther bust, donated by **Wild Arts By Raj S. Paul**, portrays the fierce beauty of the beast, capturing in bronze the power, strength and quiet elegance of this magnificent animal. Raj brings many years of experience to the field of wildlife art, having been the previous owner of Precision Mannikins Inc., a leading manufacturer of forms for the taxidermy industry. Mounted on an octagonal marble-and-wood base, this piece stands approx. 24-in. tall. For additional information, please visit www.wildartsbyrajspaul.com or contact Raj at 713-464-6862. Donor's Valuation: \$5,900



21536 Rick Taylor-Sculptor has donated a bronze titled 'Safari-The Last Great Adventure.' No. 1 of a new edition, this bronze captures that moment of total completeness, when one is where he wants to be, doing what he wants to do and dreaming about the possibilities. For more information, contact Rick Taylor at 250-353-7735. Company's Website: www.ricktaylor.com. Donor's Valuation: \$5,000

We thank Rick Taylor - Sculptor for this 100% donation.



21525 Devin Rowe's Bronzes, Inc. has once again donated a beautiful bronze sculpture,

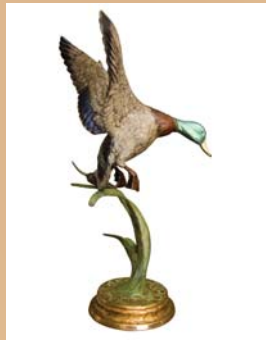
titled 'Boot Camp.' This bronze of a Lab puppy chewing on a hunting boot makes a wonderful piece for any home or office. View **Devin Rowe's** work at www.devinrowe.com or contact Devin at 541-967-9176. Donor's Valuation: \$3,700

We thank Devin Rowe's Bronzes, Inc. for this 100% donation.

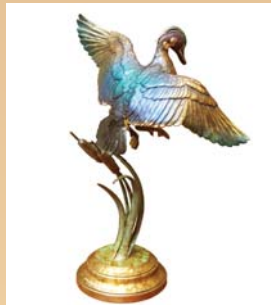


21725 From the *Double Take* series by artist **Mark Nordquist**, this wall sculpture, titled 'Ambush,' depicts three creatures hidden in the tall grass. **Mark Nordquist Studio** has donated this unique piece composed of steel brazing rods welded to model a Serengeti grass scene. Measures 24-in. x 48-in. and weighs approx. twenty lbs. For more information, contact Mark at 760-729-5452. Company's Website: www.marknordquiststudio.com. Donor's Valuation: \$2,700

We thank Mark Nordquist Studio for this 100% donation.



21729 'Descent at Dawn,' mallard drake bronze, donated by **Smith Studios**. Artist **Christopher Smith** has created a series of half life-size drakes captured in flight because of the popularity of this piece. This majestic mallard drake makes its approach to land in the reeds. The realistic patina and anatomical correctness have made this piece a favorite among collectors. For more information, contact Christopher at 979-567-9620. Donor's Valuation: \$2,450



21730 Beautiful wood duck bronze titled 'Morning Light,' donated by **Smith Studios**. This half life-size wood duck bronze is the third in a series by sculptor **Christopher Smith**. A

wonderful piece with a magnificent and vivid patina, captures a handsome, landing drake. Measures 14-in. x 11.5-in. x 6-in. For more information, contact Christopher at 979-567-9620. Donor's Valuation: \$2,450



21731 Bronze pintail titled 'Descending Sprig,' donated by **Smith Studios**. The second in a series of half life-size ducks by sculptor **Christopher Smith**. This drake is coming in for a landing among the cattails. Measures 17-in. x 10-in. x 8.5-in. For more information, contact Christopher at 979-567-9620. Donor's Valuation: \$2,450

BOOKS & VIDEO

21609 Start or complete your hunting library with an extensive collection of African hunting books, donated by **Safari Press**. Safari Press is a publisher of exceptional quality books on big game hunting, sporting firearms and wing-shooting. This donation includes these famous hunting adventures: 'On Safari with Bwana Game' by Balson, 'Search for the Spiral Horn' by Boddington, 'Memories of Africa' by Brach, 'Fragments of Africa' by Cundill, 'Tales of a Trophy Hunter' by Flack, 'Bwana Babu' by Greenfield, 'Under the African Sun' by Hibben, 'The Lost Wilderness' by Ismail, 'Elephant Hunters, Men of Legend' by Sanchez, 'Frederick Selous, a Hunting Legend' by Casada, 'Buffalo, Elephant & Bongo,' by Von Meurers, 'Hunting for Trouble' by Wainwright, 'Kwaheri' by Von Reitnauer, 'African Adventures and Misadventures' by York and finally, 'Strange Tales from the African Bush' by Wessels. For more information, contact Safari Press at 714-894-9080. Company's Website:

www.safaripress.com. Donor's Valuation: \$1,515
We thank Safari Press for this 100% donation.

21607 Start or complete your hunting library with an extensive collection of books from around the world, donated by **Safari Press**. Safari Press is a publisher of exceptional quality books on big game hunting, sporting firearms and wingshooting. This wonderful collection includes the following titles: 'To Heck with it, I'm Going Hunting' by Alward, 'Jungle Hunter' by Cavanaugh, 'Campfires' by Chilvers, 'Royal Quest' by Quimby, 'Wind in my Face' (two copies) by Thummler, 'The Weatherby' by Vokins, 'Yoshi' by Yoshimoto and 'Song of the

Summits' by Yuren. For more information, contact Safari Press at 714-894-9080. Company's Website: www.safaripress.com. Donor's Valuation: \$1,135

We thank Safari Press for this 100% donation.

CLOTHING - CAMO

21828 Premium, green, fleece-lined, zip-front jacket, black pullover with custom deer embroidery (front and back), green/black camo button-front shirt and deer-embroidered hat, donated by **Autumnwood Outfitters**. All items are constructed from washable wool for the best in comfort and durability. Size XL, not exchangeable. For more information, visit www.autumnwoodoutfitters.com.

Donor's Valuation: \$1,060

We thank Autumnwood Outfitters for this 100% donation.

CLOTHING - WOMENS



21710 Natural blue fox blanket/bedspread, donated by 2008 SCI Patron's Lounge sponsor **David Green Master Furrier**. Finally, a fur that the whole family can enjoy. This great conversation piece can add decor to your home or warmth and comfort while you relax watching your favorite weekend television show or reading a choice book or magazine. Measures 100-in. x 82-in. For more information, contact Shani by phone at 907-277-9595 or email at dsgsfurs@aol.com. Company's Website: www.davidgreenfurs.com. Donor's Valuation: \$18,000

We thank David Green Master Furrier for this 100% donation.



21301 Experience the elegance of a multi colored, 3/4-length mink coat donated by **William Fur & Leather**. This naturally colored, skin-on-skin, black, brown and beige coat, uniquely designed by famous Italian designer Giuliana Teso, will surely capture an insatiable gaze from all who view it. Medium size, NOT exchangeable. For more information, contact William at

775-828-0995.

Company website, www.williamfurs.com. Donor's Valuation: \$8,000



21709 Black sheared-beaver jacket with bright, natural chinchilla, cross-cut tuxedo front, donated by 2008 SCI Patron's Lounge sponsor **David Green Master Furrier**. This jacket is cute, sporty, classy, fun and everything in between. With its soft and supple feel, you'll want to wear this fur wherever you go. Medium size, exchangeable. For more information, contact Shani at 907-277-9595. Company's Website: www.davidgreenfurs.com. Donor's Valuation: \$8,000

We thank David Green Master Furrier for this 100% donation.



21587 Gorgeous sheared-mink swing stroller, donated by **Furs by Robert**. This stroller was designed and manufactured by Erton, from Milan, Italy, which is considered to be one of Europe's finest manufacturers of mink garments. The body of this stroller is sheared mink with cuffs, collar and hem in long-haired mink. A diamond pattern inlay of long-haired mink above the hem adds to the stylish appearance of this fine quality stroller. Comes with a silk bemburg lining and deep velvet pockets. Size is exchangeable. For more information, contact Bob Rose at 503-769-4733. Donor's Valuation: \$7,000



21586 Feel like royalty in a versatile, black sheared-mink jacket, donated by **Furs by Robert**. Exquisitely designed with natural

demibuff and black ranch mink trim in a checkerboard pattern. Jacket is reversible to a rain-resistant taffeta lining and features deep velvet pockets. The perfect garment for a casual outing or formal engagement. Size is exchangeable. For more information, contact Bob Rose at 503-769-4733. Donor's Valuation: \$6,000



21299 Sheared nutria 3/4-jacket with Canadian lynx collar and cuffs donated by **William Fur & Leather**. Natural brown in color, contrasted by the collar and cuffs, this jacket is sure to turn heads wherever you go. Flaunt your wild side with a fur that's both beautiful and fun. Medium size, NOT exchangeable. For more information, contact William at 775-828-0995 or visit www.williamfurs.com. Donor's Valuation: \$4,000



21303 **William Fur & Leather** has donated a knitted, sheared beaver jacket. Lightweight, warm and practical, this taupe-colored garment is a wonderful addition to any fur collection. Elegance with a splash of flair describes a jacket perfect for a casual outing or formal engagement. Medium size, NOT exchangeable. For more information, contact William at 775-828-0995 or visit www.williamfurs.com. Donor's Valuation: \$4,000



21302 A sheared nutria 3/4-length jacket with red fox collar has been donated by **William Fur & Leather**. Soft, plush, lightweight and stylish only begin to describe the appeal of this gorgeous jacket. Perfect for any outdoor event where warmth is a necessity. Natural in color,

size medium. NOT exchangeable. For more information, contact William at 775-828-0995. Company's website, www.williamfurs.com. Donor's Valuation: \$4,000

21406 Patty Lewis sheared beaver jacket donated by **Rockin P Ranch**. Perfect for any occasion, trendy, sassy and sharp, this olive green jacket will turn heads wherever you go. Size 10, not exchangeable. For more information, contact Patty at 970-325-0434. Company's Website: www.rockinpranch.com. Donor's Valuation: \$3,500

We thank Rockin P Ranch for this 100% donation.

21637 Unique and chic, this fitted, creme-colored goat-suede blazer, donated by **Alan Michael USA**, is the perfect addition to your wardrobe. Medium size, not exchangeable. For more information, contact Jane at 818-902-3733. Donor's Valuation: \$1,080

We thank Alan Michael USA for this 100% donation.

21753 Elegant suede wrap-around skirt and matching shoulder drape, donated by **Gary Nesse's Outdoor World**. Created for the sophisticated outdoor woman, this skirt and drape ensemble is hand-made from soft, eye-catching scarlet suede, embellished with scattered, diamond-cut Swarovski crystals. The wrap-around skirt flatters every figure and is comfortable to wear on any occasion. Each piece is trimmed with hand-cut and twisted fringe. Truly an elegant addition to any wardrobe. Fits size small to medium. For more information, contact Gary at 406-375-0611. Company's Website: www.garynesse.com. Donor's Valuation: \$1,500

We thank Gary Nesse's Outdoor World for this 100% donation.

21754 This rustic skirt and shoulder drape ensemble, donated by **Gary Nesse's Outdoor World**, is hand-made of soft, buckskin-colored suede, embellished with 'hair-pipe' and bone beads. Both pieces are trimmed with long, hand-cut and hand-twisted fringe. Slender tassels also adorn the figure-flattering and comfortable wrap-around skirt. Truly an elegant addition to any wardrobe. Size medium. For more information, visit www.garynesse.com. Donor's Valuation: \$1,500

We thank Gary Nesse's Outdoor World for this 100% donation.

EQUIPMENT

21482 **Holland & Holland** has donated a unique gift package for the discerning outdoorsman. A wonderful blend of quality and fashion, the package includes a shooting vest (right handed), a pair of gun sleeves, calf skin shooting gloves, a bronze-colored pig skin cartridge bag, various books, an H & H logo cap, an

H & H flat cap (teflon coated) and a nut brown-colored, leather-wrapped pewter flask. For more information, contact David at 212-752-7755. Company's Website: www.hollandand-holland.com. Donor's Valuation: \$6,250

We thank Holland & Holland for this 100% donation.



20906 Own a unique, artisan leather gun case from **Holloway & Naughton**. This case comes fully fitted with engraved, hand-made tools, including an oil bottle, turn screws, chamber brush and a cleaning rod with jag and brush. For more information, contact A.F. Harvison at Int. 44-16-259-6592. Donor's Valuation: \$5,000

We thank Holloway & Naughton (Premier English Shotguns) for this 100% donation.



20939 For this year's convention, **Surefire** has donated the Beast rechargeable flashlight. The Beast is the most powerful flashlight Surefire has ever produced for civilian sale. Using a xenon-filled high-intensity discharge (HID) arc lamp, the Beast puts out up to 2,000 lumens of tightly - focused, blinding white light. If you don't need all 2,000 lumens, rely on the long-running secondary LEDs which put out about as much light as a two D-cell flashlight. At only a foot and a half long, with no lamp filaments to break and a weatherproof body constructed of rugged aerospace-grade aluminum, the Beast rechargeable is the perfect searchlight for just about any activity where a lot of light is needed in a portable package. For more information, visit www.surefire.com. Donor's Valuation: \$4,160

We thank Surefire for this 100% donation.



SAMPLE

21735 **Stutzman Hell's Canyon Custom Rods** has donated a custom-built fly rod. Uniquely designed with a stabilized elk antler

grip, Islander reel, line and a matching walking staff. The winning bidder may choose from multiple options to customize his new fly rod and walking staff to personal specifications. For more information, contact Ira at 541-742-4828. Company's Website: www.hells canyoncustomrods.com. Donor's Valuation: \$3,000

We thank Stutzman Hells Canyon Custom Rods for this 100% donation.



20928 The ultimate in hearing protection for all hunting and shooting situations! **Electronic Shooter's Protection** has donated a gift certificate for the custom-fitted ESP Digital. No matter what your activity, ESP provides the best in both amplification and hearing protection. Whether you're a competitive or recreational shotgun, pistol or rifle shooter, shooting instructor or student, game or waterfowl hunter, you need properly fitted hearing protection. Each earpiece is precision molded to fit perfectly and features all-in-one construction and simple controls to ensure ease of use and reliability. For more information, visit www.espamerica.com or contact Jack at 303-659-8844. Donor's Valuation: \$1,995

We thank Electronic Shooters Protection for this 100% donation.

20880 Matched pair of Turkish walnut rifle stock blanks donated by **Yurttas Gun Stock Blanks**. Beautifully figured with high contrast and excellent layout along with straight grain for the most discerning custom stock maker. For more information, contact Ibrahim at INT 90-216-331-0754. Company's Website: www.yurttasgunstockblanks.com. Donor's Valuation: \$2,000

We thank Yurttas Gun Stock Blanks for this 100% donation.



21603 English walnut rifle stock blank, donated by **P.L. Holehan Inc.** A sublime piece with stunning figure. Turn your favorite stock builder loose on this blank and prepare to have the most beautiful gunstock around. For more infor-

mation, contact Patrick at 520-745-0622. Donor's Valuation: \$1,500

We thank P L Holehan Inc. for this 100% donation.

21458 Mini-Canal digital ear protectors, donated by **E.A.R./Decot Hy-Wyd Sport Glasses**. Electronic earplugs are designed to enhance the sounds around you, such as speech and game movements, but contain sharper impulse sounds, such as gunfire and flash bangs, within a designated safe level. Used within the shooting sports and law enforcement divisions, these devices have excellent protective and enhancing qualities. Buyer may upgrade to other models for additional cost. For more information, contact Andrew Gordon at 303-447-2619. Company's Website: www.earinc.com. Donor's Valuation: \$1,200

We thank E.A.R./Decot Hy-Wyd Sport Glasses for this 100% donation.



SAMPLE

21466 If your pulse is pounding, it's a Drenalin. The new Mathews Drenalin compound bow, donated by **Mathews Inc.**, features all of Mathews' innovations, including the new SE3 composite limbs. These new limbs are only 1 1/8-in. wide, helping to keep the Drenalins' weight at just 3.85-lbs. Thin is in and so is the Drenalin. Also included is the new ArrowWeb T5 quiver and a new HDII fall-away arrow rest. For more information, contact Joel Maxfield at 608-343-3489. Company's Website: www.justincharles.com. Donor's Valuation: \$1,049

We thank Justin Charles Outdoor Gear Inc -Mathews Inc. for this 100% donation.



20929 The ultimate in hearing protection for all hunting and shooting situations! **Electronic Shooter's Protection** has donated a gift certificate for the custom-fitted ESP Digital. No matter what your activity, ESP provides the best in both amplification and hearing protection. Whether you're a competitive or recreational shotgun, pistol or rifle shooter, shooting instructor or student, game or waterfowl hunter, you need properly fitted hearing protection. Each earpiece is precision molded to fit perfectly and features all-in-one construction and simple control to ensure ease of use and reliability. For more informa-

tion, visit www.espamerica.com or contact Jack at 303-659-8844. Donor's Valuation: \$1,995

We thank Electronic Shooters Protection for this 100% donation.



21604 English walnut rifle stock blank, donated by **P.L. Holehan Inc.** A sublime piece with stunning figure. Turn your favorite stock builder loose on this blank and prepare to have the most beautiful gunstock around. For more information, contact Patrick at 520-745-0622. Donor's Valuation: \$1,500

We thank P L Holehan Inc. for this 100% donation.

21459 Mini-Canal digital ear protectors, donated by **E.A.R./Decot Hy-Wyd Sport Glasses**. Electronic earplugs are designed to enhance the sounds around you, such as speech and game movements, but contain sharper impulse sounds, such as gunfire and flash bangs, within a designated safe level. Used within the shooting sports and law enforcement divisions, these devices have excellent protective and enhancing qualities. Buyer may upgrade to other models for additional cost. For more information, contact Andrew Gordon at 303-447-2619. Company's Website: www.earinc.com. Donor's Valuation: \$1,200

We thank E.A.R./Decot Hy-Wyd Sport Glasses for this 100% donation.



SAMPLE

21467 If your pulse is pounding, it's a Drenalin. The new Mathews Drenalin compound bow, donated by **Mathews Inc.**, features all of Mathews' innovations, including the new SE3 composite limbs. These new limbs are only 1 1/8-in. wide, helping to keep the Drenalins' weight at just 3.85-lbs. Thin is in and so is the Drenalin. Also included is the new ArrowWeb T5 quiver and a new HDII fall-away arrow rest. For more information, contact Joel Maxfield at 608-343-3489. Company's Website: www.justincharles.com. Donor's Valuation: \$1,049

We thank Justin Charles Outdoor Gear Inc -Mathews Inc. for this 100% donation.

21457 Mini-Canal digital ear protectors, donated by **E.A.R./Decot Hy-Wyd Sport Glasses**. Electronic earplugs are designed to enhance the sounds around you, such as speech and game movements, but contain sharper impulse sounds, such as gunfire and flash bangs, to a designated safe level. Used within the shooting sports and law enforcement divisions, these devices have excellent protection and enhancement qualities. Buyer may upgrade to other models for additional cost. For more information, contact Andrew Gordon at 303-447-2619. Company's Website: www.earinc.com. Donor's Valuation: \$1,200

We thank E.A.R./Decot Hy-Wyd Sport Glasses for this 100% donation.

FURNISHINGS - HOME



21347 Julian and Sons has teamed up again this year with another SCI exhibitor, Dave Ganley of **Intricate Wood Carvings**, to create and donate an original, solid American black walnut executive desk. The desk measures approximately 42-in. x 96-in. x 30 1/2-in., and features solid raised-panel construction, exquisitely detailed with the traditional elegance befitting a Julian and Sons masterpiece. Heavy leather inserts in the desk top complement the beautiful hand-oiled finish of the walnut. Eight drawers, two of which will be file drawers, on full-extension ball-bearing slides add to the desk's functional aspects. Dave Ganley has carved an original custom walnut front panel, measuring 20-in. tall x 30-in. wide, and featuring a beautiful, panoramic Rocky Mountain scene of a bull elk and his harem. Crafted from one solid piece of wood, the panel is more than 3 1/2-in. thick to allow Dave plenty of depth for the intricate details that characterize his talent. Together, the artists have collaborated on this beautiful heirloom-quality desk that will capture the attention of everyone who views it for generations to come. Buyer is responsible for shipping. For more information, contact Tom at 501-362-7933 or Dave at 406-249-5155. Company Websites: www.julianandsons.com, www.intocarving.com Donors' Valuation: \$32,500

We thank Julian & Sons and Intricate Wood Carvings for this 100% donation.



SAMPLE

21370 Rhodesian teak refectory table, donated by **Sleeperwoods**. All pieces are made from

recycled South African railway ties. Beautifully crafted and polished to a lustrous shine, this table makes an excellent addition to any dining room. Measures 134-in. x 48-in., seats 10 to 12 and weighs approx. 300-lbs. For more information, contact Tracey at 727-531-6418. Company's Website: www.sleeperwoods.co.za. Donor's Valuation: \$9,850

21392 African Odyssey has donated a Rhodesian teak-wood bar for the 2008 SCI Convention. Carefully crafted using old railroad ties from Africa, the bar's thoughtful design includes a rear opening for a refrigerator and plenty of storage space. Perfect for entertaining guests at your home or hunting lodge. Measures approx. 8-ft. x 4-ft. For more information, contact Sheila Sharman at 707-448-1902. Company's Website: www.africanodyssey.com. Donor's Valuation: \$8,000

We thank African Odyssey for this 100% donation.



SAMPLE

21647 A 19-gun, heirloom-quality gun cabinet, donated by **Puro Humidors-Armero**. This cabinet is crafted by Old-World artisans using the finest, kiln-dried woods from around the world with solid-brass hardware and stands over six feet tall. The top section contains two laminated/beveled glass doors with a colorless membrane, resulting in 3/8-in. thickness. When the doors open, two rows of supports are revealed that display a total of nineteen rifles or shotguns. The cabinet also contains two telescoping side carts to better access the back row of rifles or shotguns in addition to the ten handguns between the side doors and telescoping sides. Bar locks prevent the removal of guns from the front and sides and ten individual locks prevent handgun removal. Four drawers contained in the lower section of the cabinet are mounted on telescoping slides and are perfect for storing ammunition, cartridges or additional handguns. Measures 78 1/2-in. tall x 56-in. wide x 23 1/4-in. deep and weighs approx. 330-lbs. For more information, visit www.armeroguncabinets.com or contact Deon Rasmuson at 866-206-7876.

Company's Website: www.purohumidors.com. Donor's Valuation: \$7,500

We thank Puro Humidors - Armero for this 100% donation.



SAMPLE

21451 Exotic cherry coffee table with walnut inlay, donated by **Advanced Taxidermy and Wildlife Design Ltd**. The table features a steelhead lying on a stone riverbed, surrounded by rippling waters. The steelhead diorama exquisitely incorporates a majestic representation of the fish's natural habitat, telling a story while offering a world-class, museum-quality presentation. All carpentry is meticulously hand crafted and reflects heirloom-quality work. Genuine Canadian walnut inlay adds a touch of elegance to this unique original. For more information, please contact Shawn Galea at 416-614-7320. Company's Website: www.advancedtaxidermy.com. Donor's Valuation: \$6,200

We thank Advanced Taxidermy & Wildlife Design Ltd for this 100% donation.



SAMPLE

20932 Rustic, 12-light elk antler chandelier donated by **Rocky Mountain Antler Co**. Created from real Colorado elk antler sheds, this chandelier was custom made by **Bill Moye**. Signed and engraved with 'SCI 2008.' Heavy-duty electrical wiring is hidden inside the antlers to create a most pleasing and natural appearance. Measuring approx. 4-ft. x 4-ft., this imposing and beautiful chandelier has twelve lights, is U.L. approved for safety and complies with building codes. Weighs approx. 100 lbs. For more information, contact Bill Moye at 303-688-5213 or visit www.rockymountainantler.com. Donor's Valuation: \$6,000



SAMPLE

21189 Beautiful 12-gun cherry Gun Safe display cabinet, donated by **Gun Safe**. All Gun Safe

firearm and trophy room cabinets are hand-crafted in America. The artisans at Gun Safe can incorporate custom-ordered cabinets into existing styles, decors and furnishing arrangements such as office desk sets, bookcases and trophy rooms for a personal effect unique to you. This Gun Safe is stained Boston cherry color and is fitted with beveled glass. Other features include finger-tap lighting, steel safe door in the cabinet base with rollout doors, detailed scrollwork and locking steel bars to protect your investment while showcasing your valuable firearms. Measures 34-in. wide x 77 1/2-in. tall x 21 1/2-in. deep and weighs approx. 350 lbs. For more information, contact William at 877-448-6723. Company's Website: www.classiccommunication.com. Donor's Valuation: \$4,200



21617 Cast-metal panel and maple door with wildlife scenes, donated by **Sculptured Art Metals, Legacy Forge and Millwork Doors**. Scott Jarvie has been displaying his artwork at the SCI Convention for over three decades. This year he is offering a 3'x 7' or 3'x 6'8" maple door, featuring a large bottom rail that can be easily trimmed to make a standard 3'x 6'8" door. The door is enhanced with two cast-metal panels. One side has two nickel-plated lions and the opposite side features three greater kudus, which have been electro plated with a nickel background. The kudus themselves are plated with copper and their horns with 20K gold. Door comes boxed and ready to ship anywhere. For more information, contact Kristen at 541-884-1606. Company's Website: www.legacyforge.com. Donor's Valuation: \$3,960



SAMPLE

21808 Handcrafted, one-of-a-kind burlwood table, donated by **Antler Expressions**. Exquisite detailing throughout-a perfect place to display your favorite bronze or park your evening cocktails! For more information, con-

tact Heather at 509-255-6451. Company's Website: www.antlerexpressions.com. Donor's Valuation: \$3,500

We thank Antler Expressions for this 100% donation.

20891 Queen-size cedar log bed donated by **Triple H Hunting Inc.** Measures 8-ft. long x 6-ft. wide and weighs approximately 500 lbs. Beautifully crafted and uniquely designed. For more information, call Bruce Hubbard at 435-623-2744. Company's Website: www.triple-huntinginc.com. Donor's Valuation: \$3,500

JEWELRY



SAMPLE

21580 Finely crafted lion claw, diamond and tanzanite necklace, donated by **M J Miller & Company.** An example of animal artistry at its best. For more information, contact Michael at 847-381-7900. Company's Website: www.mjmillersjewelers.com Donor's Valuation: \$35,000

We thank M J Miller & Company for this 100% donation.

21793 Beautiful white gold and diamond necklace, donated by **Madison's Jewelers.** Stunningly hand crafted in 18K white gold with 3.6 ctw. diamonds. For more information, contact Charan Kumar at 407-788-7481. Donor's Valuation: \$27,950

20342 Handmade diamond necklace donated by **Madison's Jewelers.** Crafted in 18K yellow gold with 3 ctw. diamonds. For more information, contact Charan Kumar at 407-788-7481. Donor's Valuation: \$26,500

21794 Gorgeous diamond and sapphire ring, donated by **Madison's Jewelers.** Crafted in 14K yellow gold with 6 ctw. diamonds and 2 ct. sapphire. For more information, contact Charan Kumar at 407-788-7481. Donor's Valuation: \$21,500

21135 Ladies 18K gold and Mediterranean blue treated-diamond pendant donated by **SCI Auction Department.** This stunning pendant features a rare, 6.26-ct. fancy, classic pear-shaped diamond set in 18K yellow gold with rhodium plating for a beautiful white gold appearance. The center diamond is surrounded with seventeen brilliant-cut round diamonds, 1.36 ctw. Simply breathtaking. For more information, contact the SCI Auction Department at 520-620-9313. Donor's Valuation: \$14,000

We thank SCI-Auction Department for this 100% donation.

21795 Exquisite, hand crafted diamond ring, donated by **Madison's Jewelers.** Carefully fashioned in 18K yellow gold with 1.5 ctw. diamonds. For more information, contact Charan Kumar at 407-788-7481. Donor's Valuation: \$12,700

21695 Custom, hand-crafted African lion's claw necklace, donated by **Jensen Ringmaker.** This spectacular piece of jewelry is masterfully crafted in 14K gold with 2 ctw. of brilliant, pave-set diamonds. A wonderful balance between natural beauty and creative design, the piece is a perfect addition to your collection. For more information, contact Duane at 208-678-5412. Donor's Valuation: \$12,500

We thank Jensen Ringmaker for this 100% donation.

21797 Custom-made 18K yellow gold, diamond bezel for a men's Rolex, donated by **Madison's Jewelers.** For more information, contact Charan Kumar at 407-788-7481. Donor's Valuation: \$9,500

21796 Diamond and sapphire ring, donated by **Madison's Jewelers.** Crafted in 14K yellow gold with a dazzling honeycomb design and 3.2 ctw. diamonds. For more information, contact Charan Kumar at 407-788-7481. Donor's Valuation: \$8,500

21798 Custom-made 18K yellow gold, diamond bezel for a ladies Rolex, donated by **Madison's Jewelers.** For more information, contact Charan Kumar at 407-788-7481. Donor's Valuation: \$8,200



SAMPLE

21399 A diamond polar bear pin/pendant has been donated by **Singleton-Moss Custom Goldsmith & Jewelry Design.** Beautifully crafted in 18K white and yellow gold, a polar bear stands on an ice floe over a seal carved from whale baleen. This piece can be worn as a pin or a pendant and contains approx. 1 ctw., pave-set VS, colorless diamonds. Number one of five only. For more information, contact Linda at 612-349-9314 or visit www.singleton-moss.com. Donor's Valuation: \$7,500

We thank Singleton-Moss Custom Goldsmith & Jewelry Design for this 100% donation.

21697 Custom, hand crafted sable pendant, donated by **Jensen Ringmaker.** Truly an eye-

catcher, this breathtaking pendant is fashioned from 18K gold with 1 ctw. of sparkling, pave-set diamonds. A fantastic piece to complement any outfit. For more information, contact Duane at 208-678-5412. Donor's Valuation: \$5,560

We thank Jensen Ringmaker for this 100% donation.



21120 A steel Tompion GMT watch with alarm has been donated by **William and Son.** This fine watch features a blue dial with large date and second time zone, the movement set on a blue crocodile strap. Case No. 005. For additional information, contact Vina at Int. 44-207-493-8385. Donor's Valuation: \$6,000

We thank William & Son for this 100% donation.



21719 Ladies 14K yellow gold, sapphire-and-diamond bracelet, donated by **Swanepoel & Scandrol Safaris.** A sparkling bracelet that contains two natural blue sapphires, 3 ctw., and two round, brilliant-cut, SI diamonds, 1 ctw. This lovely bracelet will complement any fine jewelry collection. For more information, contact Sandy Cunningham at 281-334-7691. Company's Website: www.hunt-africa.com. Donor's Valuation: \$3,500

We thank Swanepoel & Scandrol Safaris for this 100% donation.



21418 Elegant 14K Vermeil necklace with 1 ctw. of CZ stones donated by **African Elephant Hair Bracelets.** Styled after real jewelry made

from the tail hairs of elephants. The necklace is complemented with a set of 14K Vermeil dangle earrings with 1/2 ctw. of CZ stones. For more information, visit www.safarijewelry.com. Donor's Valuation: \$1,500

We thank African Elephant Hair Bracelets for this 100% donation.

21820 Hand-scrimshawed leopard pendant, donated by **Mary Mueller**. This pendant is intricately detailed with a scrimshawed leopard image on mammoth ivory. Mary works under ten-to-twenty power magnification to create these miniature works of art. For more information, contact Mary at 907-345-1289. Donor's Valuation: \$1,500

We thank Mary Mueller for this 100% donation.



21424 Elegant 14K Vermeil necklace with 1 ctw. of CZ stones, donated by **African Elephant Hair Bracelets**. Styled after real elephant hair jewelry made from the tail hairs of elephants. The necklace is complemented by a set of 14K Vermeil dangle earrings with 1/2 ctw. of CZ stones. For more information, visit www.safarijewelry.com. Donor's Valuation: \$1,500

We thank African Elephant Hair Bracelets for this 100% donation.

KNIVES

21456 A unique, specially engraved, 4-piece, DiamondBlade, Friction Forged knife set, donated by **Knives of Alaska Inc. & Alaska Expedition Co.**, made by **DiamondBlade LLC**. This specially engraved set includes the Summit all-purpose hunting knife, Goddard Traditional Hunter, Pinnacle I skinner and Pinnacle II caping knife. All knives have handles crafted from extremely rare, beautiful and functional 'Pere David' deer antlers. For more information, visit www.diamondbladeknives.com. Donor's Valuation: \$2,900



21527 An excellent addition to your collection, a mammoth tooth, Bowie knife has been donated

by **Spencer Knives**. The blade of this knife was custom designed and ground by Tiny Spencer out of 440c stainless steel. The handle was shaped from an 11,000-year-old woolly mammoth tooth with a mammoth jaw fashioned into a display stand. The brass is hand-engraved by Bob Valade. For more information, contact Tiny at 503-325-2336. Company's Website: www.spencerknives.com. Donor's Valuation: \$2,600

We thank Spencer Knives for this 100% donation.



21268 Handcrafted, liner-lock folding knife with serial No. 164, titled 'Cowboy,' donated by **Carlton R. Evans Handmade Knives**. This knife features a cracked-ice-fossil, woolly mammoth ivory handle that is naturally brown in color. The blade and spacer are stainless-steel Damascus with a mosaic Damascus bolster and Damascus thumb stud. Intricate file work on the blade, bolster, spacer and liners has been all done by hand, one cut at a time. Other details include woolly mammoth-ivory lanyard beads, all hand cut, shaped and hand polished. The screws are heat colored, and titanium liners are jeweled and anodized. Carlton's knife comes with a certificate of authenticity and a hand-tooled leather sheath. The finished product is not just a knife, but a work of art that doubles as a practical tool. Blade length 3.24-in., overall length 7.76-in. and fully closed length 4.52-in. For more information, contact Carlton at 817-223-8556 or visit www.evanshandmadeknives.com. Donor's Valuation: \$2,550

We thank Carlton R. Evans Handmade Knives for this 100% donation.



21365 A custom knife with stainless Damascus blade has been donated by **Continental Divide Knives**. The knife handle is carefully crafted from warthog tusk ivory and accented with nephrite jade, Bocote wood and silver. Knife comes with a display base fashioned from Redwood burl and warthog ivory tips. For more information, visit www.cdknives.com. Donor's Valuation: \$2,200



SAMPLE

21537 Pendleton handmade survival knife, donated by **Pendleton Knives**. Made with a

beautiful sheep horn handle, this knife features 1/4-in. blade stock, a 5 1/2-in. blade. Measures 10 1/4-in. overall and a guard crafted of 416 stainless steel. Comes with a hand-sewn, shoulder-leather sheath specially fitted to the knife. For more information, contact Lloyd at 209-296-3353. Donor's Valuation: \$2,100

We thank Pendleton Knives for this 100% donation.

21632 Contemporary hand crafted 'Charlton Ltd.' Damascus cutlery steel, pipe-tomahawk, donated by **DAMASCUS - USA (Charlton Ltd.)** One-of-a-kind, 500-plus-layer, forged-to-shape after an original American Indian design. For more information, contact Rob Charlton at 252-221-2010. Company's Website: www.damascususa.com. Donor's Valuation: \$1,500

OPTICS

21453 The Leica 10x42 Geovid BRF, donated by **Leica Camera Inc.**, combines Leica's unbeatable optical performance with the industry's most accurate rangefinder, all in one compact unit. The rangefinder portion of the Geovid offers Leica's patented red LED readout, scan mode, and built-in rain and snow modes and will accurately range targets from 10 to 1,300-yds. The Geovid is a true hinge binocular with an aircraft-grade aluminum housing and boasts an industry-leading waterproof rating of 16.5-ft. For more information, visit www.leica-camera.us/home. Donor's Valuation: \$2,695

We thank Leica Camera Inc for this 100% donation.



21460 New England Custom Gun Service has donated a Schmidt & Bender 1.5-6x42 Flashdot Zenith riflescope. Extremely versatile and excellent for close-range hunting on large game, this illuminated scope's 6x upper limit allows precise bullet placement at all but the longest distances. The large 42mm objective lens provides outstanding low-light performance and a large field of view, making it highly efficient for driven game, stalking and high-seat or stand hunting. Adjust the full magnification range with just one 180-degree turn of the adjustment dial and experience the 'POSICON' reticle control that provides a graphic indication of the reticle's position and allows indexing of the reticle for different points of impact. For more information, visit www.newenglandcustomgun.com. Donor's Valuation: \$1,929

We thank New England Custom Gun Service for this 100% donation.



21461 New England Custom Gun Service has donated a Schmidt & Bender 1.5-6x42 Zenith riflescope. Extremely versatile and excellent for close-range hunting on large game, this

scope's 6x upper limit allows for precise bullet placement at all but the longest distances. The large 42mm objective lens provides outstanding low-light performance and a large field of view, making it highly efficient for driven game, stalking and high-seat or stand hunting. Adjust the full magnification range with just one 180-degree turn of the adjustment dial and experience the 'POSICON' reticle control that provides a graphic indication of the reticle's position and allows indexing of the reticle for different points of impact. For more information, visit www.newenglandcustomgun.com. Donor's Valuation: \$1,499

We thank New England Custom Gun Service for this 100% donation.

21736 Adventure Outfitters has donated a Bushnell Elite 20-60 x 80mm spotting scope. Soon to set new standards for clarity and dependability, this spotting scope is engineered using the finest materials, including ED Prime Extra-Low Dispersion fluorite glass. ED Glass delivers amazing color resolution and contrast to bring out the most distinct details during low-light conditions. Whether you're chasing bull elk on a snow-covered mountain or bird-watching on a wind swept beach, the Elite is an easy choice for optimum viewing. For more information, contact Jeff at 503-629-5642. Donor's Valuation: \$1,174

We thank Adventure Outfitters for this 100% donation.



21621 The perfect scope for African dangerous game rifles or short-barreled brush guns, the Classic Diavari 1.1-4 x 24 T* riflescope, donated by **Carl Zeiss Sports Optics**, is a fine choice for lightweight rifles as well. Boasting a 102-ft. field of view at 100 yds. at 1.1x magnification, this scope will easily allow for short-range shooting on all types of dangerous game and is especially well-suited for taking running shots on game with both eyes open. The Diavari has every feature needed for accurate shot placement in the most challenging conditions. For more information, visit www.zeiss.com/sports. Donor's Valuation: \$1,136

We thank Carl Zeiss Sports Optics for this 100% donation.



21620 Zeiss Conquest 10x40 T* ABK binoculars, donated by **Carl Zeiss Sports Optics**. Experience the acclaimed Zeiss T* anti-reflective

multi-coating on all glass-to-air surfaces and the brilliance of the proprietary Zeiss Abbe-Konig prisms, which diminish light-loss, resulting in razor-sharp contrast and accurate color reproduction. Ergonomically designed for comfortable use, yet rugged enough for outdoor use in all weather conditions. Both waterproof and dustproof, Conquest binoculars are nitrogen filled to ensure a fog-free interior and feature easy-to-use rotating eye cups that lock into position for use with or without eyeglasses. For more information, visit www.zeiss.com/sports. Donor's Valuation: \$1,135

We thank Carl Zeiss Sports Optics for this 100% donation.

SERVICES

21806 FTW Outfitters, LLC. has donated a 4-day/5-night Sportsman's All-weather All-terrain Marksmanship (SAAM) instruction course for SAAM Intense or SAAM/Hunt Combo for two people. On the 12,000-acre FTW Ranch, you will be taught by Special Forces Operations instructors to shoot dependably from a wide variety of shooting positions in varied weather conditions and terrain. Here's the chance to hone your skills and become a better, more ethical hunter or just a better shot at distances from 100 to 500 yds., using your own firearm. Learn about ballistics, equipment capabilities and proper cleaning procedures, the environmental effects on your bullet and how to use your surroundings to your advantage in all rifle hunting situations. Includes San Antonio airport pickup (if flying), 1st-class meals, beverages and cabin accommodations. Course must be completed in 2008 and can be scheduled for spring (March-May) or fall (Oct-Nov) within 60 days from date of purchase on a first-come, first serve basis. Not transferable. Additional people may be added for \$2,850 each or observers for \$750 each. Excludes Texas hunting license \$45; 5-day non-resident exotic license or \$300 whitetail, available at the ranch; trophy fees for species if SAAM/Hunt Combo is selected and gratuities. Visit the FTW booth for more details or contact David at 864-814-3220 for additional information. Company's Website: www.ftwoutfitters.com. Donor's Valuation: \$6,000

We thank FTW Outfitters, LLC. for this 100% donation.

21807 FTW Outfitters, LLC. has donated a 4-day/5-night Sportsman's All-weather All-terrain Marksmanship (SAAM) instruction course for SAAM Intense or SAAM/Hunt Combo for two people. On the 12,000-acre FTW Ranch, you will be taught by Special Forces Operations instructors to shoot dependably from a wide variety of shooting positions in varied weather conditions and terrain. Here's the chance to hone your skills and become a better, more ethical hunter or just a better shot at distances from 100 to 500 yds., using your own firearm. Learn about your

ballistics, equipment capabilities and proper cleaning procedures, the environmental effects on your bullet and how to use your surroundings to your advantage in all rifle hunting situations. Includes San Antonio airport pickup (if flying), 1st-class meals, beverages and cabin accommodations. Course must be completed in 2008 and can be scheduled for spring (March-May) or fall (Oct-Nov) within 60 days from date of purchase on a first-come, first serve basis. Not transferable. Additional people may be added for \$2,850 each or observers for \$750 each. Excludes Texas hunting license \$45; 5-day non-resident exotic license or \$300 whitetail, available at the ranch; trophy fees for species if SAAM/Hunt Combo is selected and gratuities. Visit the FTW booth for more details or contact David at 864-814-3220 for additional information. Company's Website: www.ftwoutfitters.com. Donor's Valuation: \$6,000

We thank FTW Outfitters, LLC. for this 100% donation.



21602 Two round-trip airline tickets to New Zealand, donated by **Esplanade Tours** and **Trader Keith's**. Fly economy class on **Air New Zealand** from Los Angeles to New Zealand. Valid until October 31, 2008. Esplanade Tours has been planning and operating individual itineraries and group tours since 1954, focusing on travel to destinations for the most experienced and sophisticated hunters and travelers. Excludes applicable taxes. For more information, contact Katharine at 800-628-4893. Company's Website: www.traderkeith.com. Donor's Valuation: \$5,140

We thank Trader Keith's for this 100% donation.



21636 One round-trip, economy-class airline ticket on **South African Airways**, donated by **Esplanade Tours** and **Trader Keith's**. Fly out of New York or Dulles to Johannesburg, South Africa. Valid until May 31, 2008. Esplanade Tours has been planning individual and group itineraries for over fifty years and enjoys a very close relationship with members of the hunting community. They offer pre- and post-hunting travel arrangements for the hunter and observer, with

special emphasis on unusual itineraries for the most sophisticated traveler. Excludes applicable taxes. For more information about all your travel needs, contact Jill Potash at 800-628-4893. Company's Website: www.traderkeith.com. Donor's Valuation: \$3,270

We thank Trader Keith's for this 100% donation.



21452 We all know that hunting creates some of the best and most cherished memories family members can share. Deepen the experience with a new 2-day, parent-child hunting tutorial donated by **Gunsite Academy, Inc.** Here's an opportunity for you and your child to challenge your skills, learn new techniques and work through realistic hunt simulations together. Regardless of your hunting and shooting background, our customized tutorial will provide a rich and practical learning experience for both of you. For more information, contact Jane at 928-636-4565. Company's Website: www.gunsite.com. Donor's Valuation: \$3,000



SAMPLE

21201 Timberwolf Trading Co. has donated this unique opportunity to refine your wine palate while enjoying the company of your friends or colleagues. Timberwolf will come to your home or office with a selection of wines from the Southern Hemisphere, and will pour your guests 2 oz. of each wine and give a history of the wine and the region it is from. The wines come from places such as South Africa, Australia, Chile and more. Timberwolf brings enough wine to float a battleship, but the customer is responsible for providing glassware and hor d'oeuvres. The donation value covers twelve couples (twenty-four people total) at the event. Twenty-four days' advance notice is required to allow ample time for Timberwolf to make travel arrangements. Customer will be contacted prior to the event to determine the price range of wines he or she is interested in. Sales sheets will be present at the event for those interested in making purchases. Limited to contiguous United States (excludes Hawaii and Alaska). For more information, contact Dave Cole at 847-635-6650. Company's Website: www.timberwolftradingco.com. Donor's Valuation: \$2,500

We thank Timberwolf Trading Co for this 100% donation.

21202 Timberwolf Trading Co. has donated this unique opportunity to refine your wine palate while enjoying the company of your friends or colleagues. Timberwolf will come

to your home or office with a selection of wines from the Southern Hemisphere, and will pour your guests 2 oz. of each wine and give a history of the wine and the region it is from. The wines come from places such as South Africa, Australia, Chile and more. Timberwolf brings enough wine to float a battleship, but the customer is responsible for providing glassware and hor d'oeuvres. The donation value covers twelve couples (twenty-four people total) at the event. Twenty-four days' advance notice is required to allow ample time for Timberwolf to make travel arrangements. Customer will be contacted prior to the event to determine the price range of wines he or she is interested in. Sales sheets will be present at the event for those interested in making purchases. Limited to contiguous United States (excludes Hawaii and Alaska). For more information, contact Dave Cole at 847-635-6650. Company's Website: www.timberwolftradingco.com. Donor's Valuation: \$2,500

We thank Timberwolf Trading Co for this 100% donation.

20933 Timberwolf Trading Co. has donated this unique opportunity to refine your wine palate while enjoying the company of your friends or colleagues. Timberwolf will come to your home or office with a selection of wines from the Southern Hemisphere, and will pour your guests 2 oz. of each wine and give a history of the wine and the region it is from. The wines come from places such as South Africa, Australia, Chile and more. Timberwolf brings enough wine to float a battleship, but the customer is responsible for providing glassware and hor d'oeuvres. The donation value covers twelve couples (twenty-four people total) at the event. Twenty-four days' advance notice is required to allow ample time for Timberwolf to make travel arrangements. Customer will be contacted prior to the event to determine the price range of wines he or she is interested in. Sales sheets will be present at the event for those interested in making purchases. Limited to contiguous United States (excludes Hawaii and Alaska). For more information, contact Dave Cole at 847-635-6650. Company's Website: www.timberwolftradingco.com. Donor's Valuation: \$2,500

We thank Timberwolf Trading Co for this 100% donation.

20954 Timberwolf Trading Co. has donated this unique opportunity to refine your wine palate while enjoying the company of your friends or colleagues. Timberwolf will come to your home or office with a selection of wines from the Southern Hemisphere, and will pour your guests 2 oz. of each wine and give a history of the wine and the region it is from. The wines come from places such as South Africa, Australia, Chile and more. Timberwolf brings enough wine to float a battleship, but the customer is responsible for providing glassware

and hor d'oeuvres. The donation value covers twelve couples (twenty-four people total) at the event. Twenty-four days' advance notice is required to allow ample time for Timberwolf to make travel arrangements. Customer will be contacted prior to the event to determine the price range of wines he or she is interested in. Sales sheets will be present at the event for those interested in making purchases. Limited to contiguous United States (excludes Hawaii and Alaska). For more information, contact Dave Cole at 847-635-6650. Company's Website: www.timberwolftradingco.com. Donor's Valuation: \$2,500

We thank Timberwolf Trading Co for this 100% donation.



21186 Gift certificate for a 4-day, intensive long-range shooting school, donated by **Holland's Shooters Supply Inc.** Acquire the knowledge and skill to engage targets at distances of 300 to 800 yards. Holland's professional instructors are skilled in the art of long-range shooting, utilizing Minute-of-Angle correction and Mil-radian range-finding techniques. All shooting is done under realistic outdoor conditions to prepare you for the most challenging conditions in the field. For more information, visit www.holland-guns.com. Donor's Valuation: \$1,175

We thank Holland's Shooters Supply Inc. for this 100% donation.

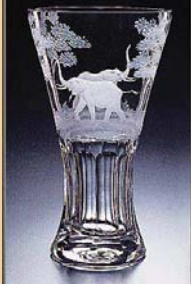
SPECIALTY ITEMS



21599 'Reward the Board!' Have you been looking for that unique gift for your board of directors? This year **RedOxx.com** has targeted the boardroom by donating its unique and highly sought-after corporate package. The winning bidder will receive twelve Air Boss carry on bags and twelve Slimline padded briefcases (laptop-compatible). Each of these bags is designed to elevate the status of your brand with a custom package that includes twelve distinctive colors, digitizing of your logo and delivery by ground

from the Montana factory. Red Oxx arrived at the formula for the world's toughest bag by looking at its roots as parachute riggers. The rigger motto is 'I will be sure always' and each bag is backed by an unconditional lifetime warranty. For more information, contact Jim Markel by phone at 888-733-6999 or email at jim@redoxx.com. Company's Website: www.redoxx.com. Donor's Valuation: \$4,750
We thank Red Oxx Mfg. Inc for this 100% donation.

TABLEWARE



21036 Crystal pitcher, decanter and six cognac glasses all engraved with elephants, donated by **Joan Marie Galleries**. This set of Queen Lace Crystal, titled 'Elephant Walk,' is hand-engraved using the copper wheel technique developed during the Renaissance. This method requires forty to fifty different wheels to engrave a single animal, but the results are spectacular. To view a sampling of work, visit www.queenlacecrystal.com or contact Joan Marie at 570-839-7510. Donor's Valuation: \$2,250
We thank Joan Marie Galleries for this 100% donation.

TAXIDERMY



SAMPLE
21761 Taxidermy services for a custom, life-size African lion mount, donated by veteran SCI exhibitor **Elephant Head Taxidermy, Inc.** Put forty-eight years of experience to work for you to preserve the memory of your hunt for years to come. Service includes a hardwood base with habitat. Client to provide lion. Life-size zebra or other prey are not included. Must be used by January 2010. For more information, contact Ed at 303-433-3001. Company's Website: www.elephantheadtaxidermy.com. Donor's Valuation: \$8,365



SAMPLE
21562 Taxidermy services for a life-size lion mount, complete with hardwood base and a custom habitat scene, donated by **Bob Vitro of Safari Specialists Inc. & True-Life Taxidermy** and **Nico Lourens Safaris**. Any shipping and handling fees not included. For more information, contact Bob Vitro at 845-386-4312. Company's Website: nlsafaris@mweb.co.za. Donor's Valuation: \$7,500
We thank Nico Lourens Safaris for this 100% donation.

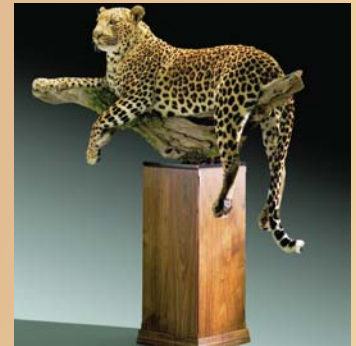
21720 Conroe Taxidermy and Swanepoel & Scandrol Safaris have donated taxidermy services for either a full-mount leopard or a pedestal-mount buffalo and \$700 in clearing fees from ABX Logistics. Species not exchangeable. For more information, contact Barrett Simpson at 281-367-2745. Company's Website: www.hunt-africa.com. Donor's Valuation: \$4,500
We thank Swanepoel & Scandrol Safaris for this 100% donation.



SAMPLE
21217 Taxidermy work for a life-size African lion mount with habitat, donated by **Nature's Design Taxidermy by Ray Hatfield**. The winner of the 2005 World Taxidermy Competition for life-size mammal, Ray is willing to work with you to design a custom mount for your trophy room. Includes any welding and habitat. Does NOT include hide, skin or wood materials used for a base and cannot be used for work currently in-house. Crating and shipping are not included. Offer is good for one year from date of purchase. For more information, contact Chris at 307-527-6053. Company's Website: www.natures-designtaxidermy.com. Donor's Valuation: \$7,000
We thank Nature's Design Taxidermy By Ray Hatfield for this 100% donation.



SAMPLE
21341 Gift certificate for a life-size leopard mount, donated by **Jonas Brothers Taxidermy Studio**. Preserve the memory of your hunt with quality taxidermy that is sure to bring you back to the experience itself. Leopard mount includes a natural habitat base. Leopard skin to be provided by client. Does not include optional wooden octagonal base. For more information, call Bill Zlupko at 303-466-1112. Donor's Valuation: \$5,995
We thank Jonas Brothers Taxidermy Studio for this 100% donation.



SAMPLE
21224 Artworks Taxidermy Inc. has donated a gift certificate valued at \$4,000 for taxidermy services. A professional taxidermist since 1974, owner Michael Jankovsky has work experience on nearly every game species in the world, and together with his team will produce a mount that is innovative, unique and artistically designed. Artworks Taxidermy is dedicated to high-quality craftsmanship and accuracy, with attention to detail evident in every mount. Established in 1994 as a custom taxidermy studio for the discriminating hunter, Artworks is located near Denver's Intl. airport and is approved to receive shipments directly from anywhere you'll be hunting. Gift certificate may not be used for crating, shipping, clearing or receiving/handling charges. Valid for twelve months from date of purchase. Capture the memory of your hunt with fine taxidermy from Artworks Taxidermy. For additional information, visit www.artworkstaxidermy.com. Donor's Valuation: \$4,000
We thank Artworks Taxidermy Inc. for this 100% donation.



20905 Life-size leopard mount, including habitat, donated by **High Uintahs Taxidermy**. This taxidermy studio is experienced in handling trophies from around the world. Quality standards are guaranteed by **Dean Schulte**, owner and primary taxidermist, so rest assured that your trophy will be handled with the utmost care and treated as an individual work of art. This offer is good for 2008 only and does not include crating/shipping costs. For additional information, visit www.deansart.com or contact Dean at 435-336-4141. Donor's Valuation: \$3,500



SAMPLE

21634 Custom life-size leopard mount, donated by **Western Taxidermy Studio**. The winning bidder will receive taxidermy services for one life-size mount and a basic base. Skin to be provided by the buyer. Services must be used by January 1, 2009. Not included are a custom wood base, shipping, crating and/or brokerage fees. For more information, contact Jim Edwards at 252-356-2109. Company's Website: www.westerntaxidermy.com. Donor's Valuation: \$3,500

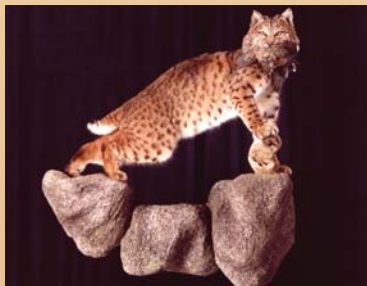
We thank Western Taxidermy Studio for this 100% donation.



SAMPLE

21749 Taxidermy work for a life-size leopard mount, donated by **Dave's Wildlife Art & Taxidermy**. Making each piece an artistic state-

ment is a goal Dave strives to achieve. With over 20 years of experience at work, Dave will make the memory of your hunt come to life with a custom mount. Includes a rock base for floor or wall display. Not good for work in progress. For more information, contact Dave at 801-621-3240. Company's Website: davidbutts.com. Donor's Valuation: \$3,500



SAMPLE

21506 Mounted bobcat complete with habitat, donated by **Wild West Wildlife Art - Taxidermy Studio**. **Mitch Cain**, the owner of Wild West Wildlife Art, is a national champion sculptor, all-around wildlife artist, taxidermist and long time SCI exhibitor and donor. With over eighteen years of experience at his disposal, Mitch's work is truly wildlife art. For more information, contact Mitch at 541-545-6075. Company's Website: www.mitchcain.com. Donor's Valuation: \$2,500

We thank Wild West Wildlife Art - Taxidermy Studio for this 100% donation.

21475 Taxidermy services for a life-size roe deer mount with base and habitat, donated by **Taxidermy Art Studio**. Shipping is not included. For more information, contact Yuri at 801-255-4754. Donor's Valuation: \$3,000

We thank Taxidermy Art Studio for this 100% donation.

VACATIONS



21439 8-day/night Chinese vacation for two people, donated by **China International Forest Travel**. Highlights of the trip include watching captivating giant pandas up close as they interact and learning about breeding efforts and preservation of habitat. Climb the awe-inspiring Great Wall and explore the imperial palace complex. This vacation package includes all flights within China and ground transportation, accommodations (double occupancy) in first-class hotels with private baths, meals, activities, tours and excursions. Schedule dates between October 12 and November 30, 2008, or March 1 to April 30 or October 12 to November 30, 2009.

Not included are airfare to and from China, passport and visa fees, and insurance for travel, baggage or trip cancellation. Also not included are personal insurance, room service and excess baggage fees. For more information, contact Zeidae Zhang by email at hunt@forest-travel.net.



21225 Enjoy the natural splendor of Zulu Nyala, named after the proud Zulu nation, on this 6-day/6-night African photo safari adventure for two, donated by **Zulu Nyala Safaris**. Schedule this trip with outfitter for open dates within two years of date of purchase. Your trip includes two game drives in the magnificent private game reserve, meals and luxurious accommodations of your choice in the Zulu Nyala Game Lodge, Heritage Safari Lodge, Luxury Tent Camp or Nyati/Ndlovu Lodge. Enjoy three meals per day prepared by the ethnic chefs, cool lounges, wide verandas, sparkling swimming pools and tennis courts. These accommodations make being 'in camp' a relaxing and pleasurable experience. The game viewing is superb, with photo opportunities abounding for elephant, rhino, leopard, buffalo, hippo, nyala and many other species of plains game. You will be amazed at the feeling of being among these beautiful and powerful creatures. Follow in the footprints of elephants along ancient riverbeds during guided walks, enjoy the thrill of clay-pigeon shooting or relax with sundowners on the river boat cruise. Excludes transfers, airfare, optional tours and bar service. For more information on the wide variety of vacation and hunting packages available at Zulu Nyala, visit www.zulunyala.com. Donor's Valuation: \$3,950



21307 Enjoy the natural splendor of Zulu Nyala, named after the proud Zulu nation, on this 6-day/6-night African photo safari adventure for two, donated by **Zulu Nyala Safaris**. Schedule this trip with outfitter for open dates within two years of date of purchase. Your trip includes two game drives in the magnificent private game reserve, meals and luxurious accommodations of your choice in the Zulu Nyala Game Lodge, Heritage Safari Lodge, Luxury Tent Camp or Nyati/Ndlovu Lodge. Enjoy three meals per day prepared by the ethnic chefs, cool lounges, wide verandas, sparkling swimming pools and tennis courts. These accommodations make being 'in camp'

a relaxing and pleasurable experience. The game viewing is superb, with photo opportunities abounding for elephant, rhino, leopard, buffalo, hippo, nyala and many other species of plains game. You will be amazed at the feeling of being among these beautiful and powerful creatures. Follow in the footprints of elephants along ancient riverbeds during guided walks, enjoy the thrill of clay-pigeon shooting or relax with sundowners on the river boat cruise. Excludes transfers, airfare, optional tours and bar service. For more information on the wide variety of vacation and hunting packages available at Zulu Nyala, visit www.zulunyala.com. Donor's Valuation: \$3,950



21308 Enjoy the natural splendor of Zulu Nyala, named after the proud Zulu nation, on this 6-day/6-night African photo safari adventure for two, donated by **Zulu Nyala Safaris**. Schedule this trip with outfitter for open dates within two years of date of purchase. Your trip includes two game drives in the magnificent private game reserve, meals and luxurious accommodations of your choice in the Zulu Nyala Game Lodge, Heritage Safari Lodge, Luxury Tent Camp or Nyati/Ndlovu Lodge. Enjoy three meals per day prepared by the ethnic chefs, cool lounges, wide verandas, sparkling swimming pools and tennis courts. These accommodations make being 'in camp' a relaxing and pleasurable experience. The game viewing is superb, with photo opportunities abounding for elephant, rhino, leopard, buffalo, hippo, nyala and many other species of plains game. You will be amazed at the feeling of being among these beautiful and powerful creatures. Follow in the footprints of elephants along ancient riverbeds during guided walks, enjoy the thrill of clay-pigeon shooting or relax with sundowners on the river boat cruise. Excludes transfers, airfare, optional tours and bar service. For more information on the wide variety of vacation and hunting packages available at Zulu Nyala, visit www.zulunyala.com. Donor's Valuation: \$3,950



21190 Enjoy the natural splendor of Zulu Nyala, named after the proud Zulu nation, on this 6-day/6-night African photo safari adventure for two, donated by **Zulu Nyala Safaris**. Schedule

this trip with outfitter for open dates within two years of date of purchase. Your trip includes two game drives in the magnificent private game reserve, meals and luxurious accommodations of your choice in the Zulu Nyala Game Lodge, Heritage Safari Lodge, Luxury Tent Camp or Nyati/Ndlovu Lodge. Enjoy three meals per day prepared by the ethnic chefs, cool lounges, wide verandas, sparkling swimming pools and tennis courts. These accommodations make being 'in camp' a relaxing and pleasurable experience. The game viewing is superb, with photo opportunities abounding for elephant, rhino, leopard, buffalo, hippo, nyala and many other species of plains game. You will be amazed at the feeling of being among these beautiful and powerful creatures. Follow in the footprints of elephants along ancient riverbeds during guided walks, enjoy the thrill of clay-pigeon shooting or relax with sundowners on the river boat cruise. Excludes transfers, airfare, optional tours and bar service. For more information on the wide variety of vacation and hunting packages available at Zulu Nyala, visit www.zulunyala.com. Donor's Valuation: \$3,950



21259 A gift certificate for a 5-day/7-night Eco-Spa package for one person has been donated by **Crocodile Bay Resort, Costa Rica**. Experience five full days of exciting adventure tours or pamper yourself with a treatment in the new 5,000-sq.-ft. spa facility. Your trip includes up to two nights in a first-class hotel in San Jose, the capital of Costa Rica. This package also includes meals and domestic bar including all local liquor, beer, wine and soft drinks at Crocodile Bay Resort. Luxurious air-conditioned accommodations at the resort, ground transfers and round-trip airfare from San Jose to Puerto Jimenez are also included. Additional guests will receive a 10% discount. Schedule dates from June 1-September 30, 2008 only. No alternative dates are available. Trip does not include international air transportation, meals in San Jose, airport departure tax (\$26), top-shelf liquor and gratuities. Arrival/departure point is Juan Santa Maria Intl. Airport in San Jose, Costa Rica. For more information, visit www.crocodilebay.com. Donor's Valuation: \$2,920



21208 Wild horses in the red desert photo safari for two persons, donated by **Platt's Guides & Outfitters**. Photograph wild, free-roaming horses, antelope, mule deer and eagles in some of Wyoming's most remote areas on this 4-day, customized vacation for two people. Includes one night at the Rustic Mountain Lodge and tent camping, all meals and beverages, 2x1 guide service and 4x4 transportation. Guests are required to furnish personal gear and sleeping bags. Customize this vacation with the outfitter to include a day of fishing for brook, brown or rainbow trout on private waters. Schedule dates with outfitter for open dates June 15-August 15, 2008 or 2009. Trip can be extended for \$380/person/day. For more information, contact Ron at 307-327-5539 or visit www.plattoutfitting.com.

Donor's Valuation: \$3,040.00

Companies with auction donations of \$1000 or less

Adventure Outfitters

- 21737 Bushnell Elite 4200 4-16 x 50mm riflescope
- 21738 Swarovski locking binoculars case
- 21739 Swarovski locking binoculars case
- 21740 Leupold neoprene riflescope cover
- 21741 King's Mountain Shadow clothing
- 21742 King's Mountain Shadow clothing
- 21743 King's Mountain Shadow clothing
- 21744 King's Mountain Shadow clothing
- 21745 King's Mountain Shadow clothing

African Elephant Hair Bracelets

- 21419 African elephant hair necklace
- 21420 African elephant hair necklace
- 21421 African two-tone collection five-strand bracelet
- 21422 Classic two-tone, five-strand bracelet
- 21423 Synthetic African elephant hair bracelet
- 21425 African elephant hair necklace
- 21426 African elephant hair necklace
- 21427 African two-tone collection five-strand bracelet
- 21428 Classic two-tone, five-strand bracelet
- 21429 Synthetic African elephant hair bracelet

Arno Bernard Custom Knives

- 21350 Custom-made, paua-handled knife
- 21351 Custom-made, giraffe bone-handled knife
- 21352 Custom-made, mammoth ivory-handled knife
- 21353 2 pairs of custom-made giraffe bone grips
- 21386 2 pairs of custom-made giraffe bone grips
- 21387 2 pairs of custom-made giraffe bone grips
- 20957 Custom-made, paua-handled knife

Aussie Gear

- 20907 Hornback crocodile belt with crocodile inlaid buckle
- 20908 Saltwater crocodile wallet and keychain

Australian South Pacific Safaris

- 21755 Australian stock whip
- 21756 Australian stock whip

Autumnwood Outfitters

- 21825 Washable wool 3/4-length jacket, vest and pullover

Benchmade Knife Company

- 21468 Benchmade model 201 'Activator' knife
- 21469 Benchmade model 211 'Activator' knife
- 21470 Benchmade model 615 'Mini-Rukus' knife
- 21471 Benchmade model 740 'Dejavoo' knife
- 21472 Benchmade model 745 'Mini-Dejavoo' knife
- 21473 Benchmade model 913 'Nitrous Stryker' knife
- 21474 Benchmade model 960 'Red' knife

Bill Wiseman & Company Inc.

- 21582 \$1,000 toward any gunsmithing service or custom rifle

Bonnet Plume Outfitters

- 21222 Canadian wolf hide
- 21223 Canadian wolf hide

Bushnell Outdoor Products

- 21464 Bushnell Elite e2 8x42 binoculars
- 21465 Bushnell Elite 1500 ARC rangefinder

Craig Tennant Originals, Inc.

- 21529 'I'm Not Going Home,' limited-edition lithograph

Crimson Trace Corporation

- 21715 Crimson Trace LG-404 laser grips
- 21716 Crimson Trace LG-405 laser grips
- 21462 Crimson Trace LG-401-P1 laser grips

DAMASCUS - USA (Charlton Ltd.)

- 21633 Damascus cutlery steel
- 21849 DAMASCUS-USA cutlery steel

Day One Camouflage

- 21373 \$250 gift certificate for camo and safari clothing
- 21374 \$250 gift certificate for camo and safari clothing
- 21375 \$250 gift certificate for camo and safari clothing
- 21376 \$250 gift certificate for camo and safari clothing

E.A.R./Decot Hy-Wyd Sport Glasses

- 21477 Non-RX shooting glasses with extra lenses
- 21478 Non-RX shooting glasses with extra lenses
- 21479 Non-RX shooting glasses with extra lenses
- 21480 Non-RX shooting glasses with extra lenses
- 21481 Non-RX shooting glasses with extra lenses

Ermilio Clothiers & Specialty Shop Ltd

- 21822 \$650 toward a men's shooting jacket
- 21823 \$650 toward a ladies' shooting jacket

Federal/ATK

- 21430 Two boxes of Federal Premium ammo in .470 Nitro Express
- 21431 Two boxes of Federal Premium ammo in .470 Nitro Express
- 21432 Two boxes of Federal Premium ammo in .470 Nitro Express
- 21433 Two boxes of Federal Premium ammo in .470 Nitro Express
- 21434 Two boxes of Federal Premium ammo in .470 Nitro Express
- 21435 Two boxes of Federal Premium ammo in .470 Nitro Express
- 21436 Two boxes of Federal Premium ammo in .470 Nitro Express

Furs Unlimited

- 21764 Blue fox hide
- 21765 Ladies' fur hat
- 21766 Men's fur hat
- 21767 Elk skin

Iowa Rotocast Plastics Inc.

- 20900 Grizzly 432-qt. cooler
- 20901 Wolverine 192-qt. cooler
- 20902 Outback 132-qt. cooler
- 20903 Mountaineer 70-qt. cooler

J.B. Hill Boot Company

- 21750 \$1,000 gift certificate toward custom Western boots
- 21751 \$1,000 gift certificate toward custom Western boots

Joan Marie Galleries

- 21037 Hand-engraved crystal bowl

Justin Charles Outdoor Gear Inc -Mathews Inc.

- 21388 Mathews LTD Collection Hunting Suit
- 21389 Justin Charles Expedition-Weight long underwear set
- 21390 Justin Charles Mid-Weight long underwear set
- 21398 Justin Charles Mid-Weight long underwear set
- 21395 Mathews LTD Collection Hunting Suit

- 21396** Justin Charles Expedition-Weight long underwear set
21397 Justin Charles Expedition-Weight long underwear set

Kauffman Knives & Optics

- 21565** Custom caping knife
21566 Custom caping knife
21567 Custom caping knife
21568 Custom caping knife
21569 Custom caping knife
21570 Custom caping knife
21571 Custom caping knife
21572 Acu-Sight shotgunner multi-gauge kit
21573 Acu-Sight shotgunner multi-gauge kit
21574 Acu-Sight Laser Bore Sight System
21575 Acu-Sight Laser Bore Sight System
21576 Acu-Sight Laser Bore Sight System
21577 Acu-Sight Laser Bore Sight System
21578 Acu-Sight Laser Bore Sight System

Knifemakers' Guild

- 21024** Custom hunting knife with sheath
21025 Custom hunting knife with sheath
21026 Custom hunting knife with sheath

Kramer Designs Corporation

- 21377** Limited-edition camo Snipe-Pod package
21378 Limited-edition camo Snipe-Pod package

Leica Camera Inc.

- 21454** Leica Rangemaster CRF 1200
21455 Leica 10x25 Ultravid BCR

MedjetAssist

- 21379** One three-year individual MedjetAssist membership
21380 One three-year individual MedjetAssist membership
21381 One one-year individual MedjetAssist membership
21382 One one-year individual MedjetAssist membership
21383 One, one-year individual MedjetAssist membership
21384 One, one-year individual MedjetAssist membership
21596 One, one-year individual MedjetAssist membership
21597 One, one-year individual MedjetAssist membership
21595 One three-year individual MedjetAssist membership

Northern Outfitters

- 21549** 9-piece extreme-weather Arctic Clothing System
21550 Full, 10-piece, exchangeable-size Arctic Clothing System
21551 Full, 10-piece, exchangeable-size Arctic Clothing System

Rockin P Ranch

- 21400** Cashmere, wool and rex rabbit-trimmed coat
21401 Cashmere, wool and fox-fur blue coat
21402 Pat Dahnke, brown beaded skirt belt
21403 Double-D Ranch leather jacket
21404 Zebra pattern leather vest
21405 Black leather/crocodile jacket
21407 Black alligator purse
21408 Black stingray purse
21409 Double-D Ranch Totatchi leather jacket

Rowland Ward

- 20925** Rowland Ward gift certificate valued at \$500
20926 Set of five signed and numbered antelope prints

Safari Photo Albums

- 21061** Springbok hide-covered photo album with suede lining
21062 Leather photo album etched with your photo on the cover
21063 Your tanned hide made into a custom photo album
21064 Springbok hide-covered photo album with suede lining

Safari Press

- 21608** Collection of North American hunting books
21610 \$500 gift certificate from Safari Press
21611 \$500 gift certificate from Safari Press
21612 \$500 gift certificate from Safari Press
21613 \$500 gift certificate from Safari Press
21614 \$500 gift certificate from Safari Press
21615 \$500 gift certificate from Safari Press

SCI-Auction Department

- 21218** 3-10X40mm Euro Diamond rifle scope
21366 Cookbook titled 'Gastronomy and the Forest'
20879 Framed print on canvas of 'Black Gold'

South Texas Tripods & Feeders Inc.

- 20994** 400-lb. electronic game feeder w/winch-up system
20995 400-lb. electronic game feeder w/winch-up system

Surefire

- 20938** Surefire Kroma flashlight
20940 Surefire 10X Dominator flashlight
20941 Surefire 10X Dominator flashlight
20942 Surefire 10X Dominator flashlight
20943 Surefire M6 Guardian flashlight
20944 Surefire M6 Guardian flashlight
20945 Surefire M6 Guardian flashlight

Tag Safari Clothing

- 20909** \$500 gift certificate for women's clothing
20910 \$500 gift certificate for men's safari clothing
20911 \$500 gift certificate for Tag gameskin luggage
20912 \$500 gift certificate for Tag Safari products

Trijicon, Inc.

- 20915** TR20 3-9x40mm Trijicon AccuPoint riflescope
20916 TR20 3-9x40mm Trijicon AccuPoint riflescope
20918 TR21R 1.25-4x24mm Trijicon AccuPoint riflescope
20919 TR21R 1.25-4x24mm Trijicon AccuPoint riflescope
20920 TR21R 1.25-4x24mm Trijicon AccuPoint riflescope
20921 TR21R 1.25-4x24mm Trijicon AccuPoint riflescope
20922 TR22R 2.5-10x56mm Trijicon AccuPoint riflescope
20923 TR22R 2.5-10x56mm Trijicon AccuPoint riflescope

Trophy Room Books

- 21179** Three limited-edition books by C.J. McElroy
21180 Five books by professional and sport hunters
21181 Four books by professional and sport hunters
21182 Set of three limited-edition books by professional hunters
21183 \$500 gift certificate toward big game hunting books
21184 \$500 gift certificate toward big game hunting books
21185 \$500 gift certificate toward big game hunting books

Winchester Ammunition

- 21371** One case SXP .300 WSM ammunition
21372 1 case SXP .300 Win. Mag. ammunition